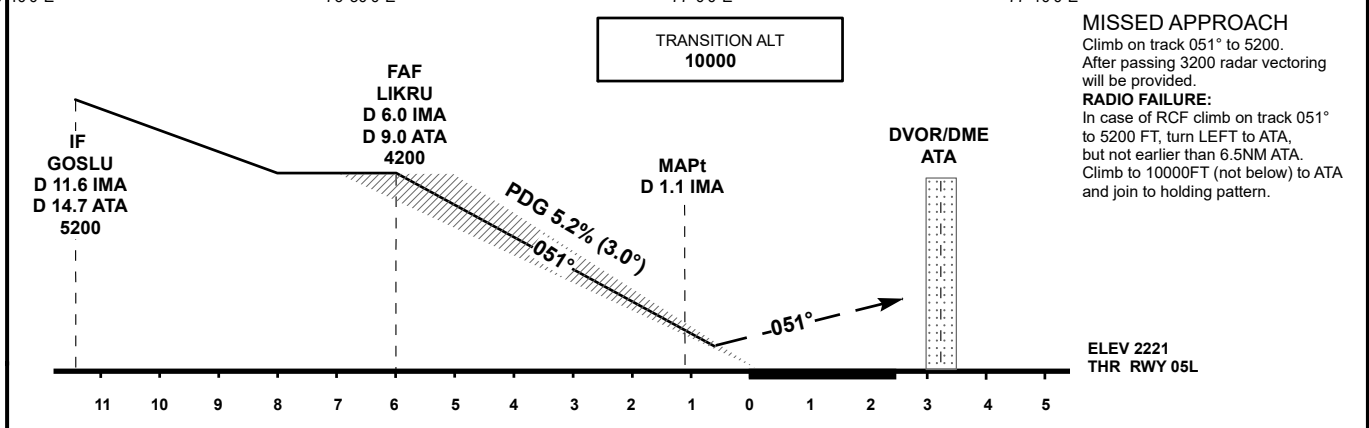
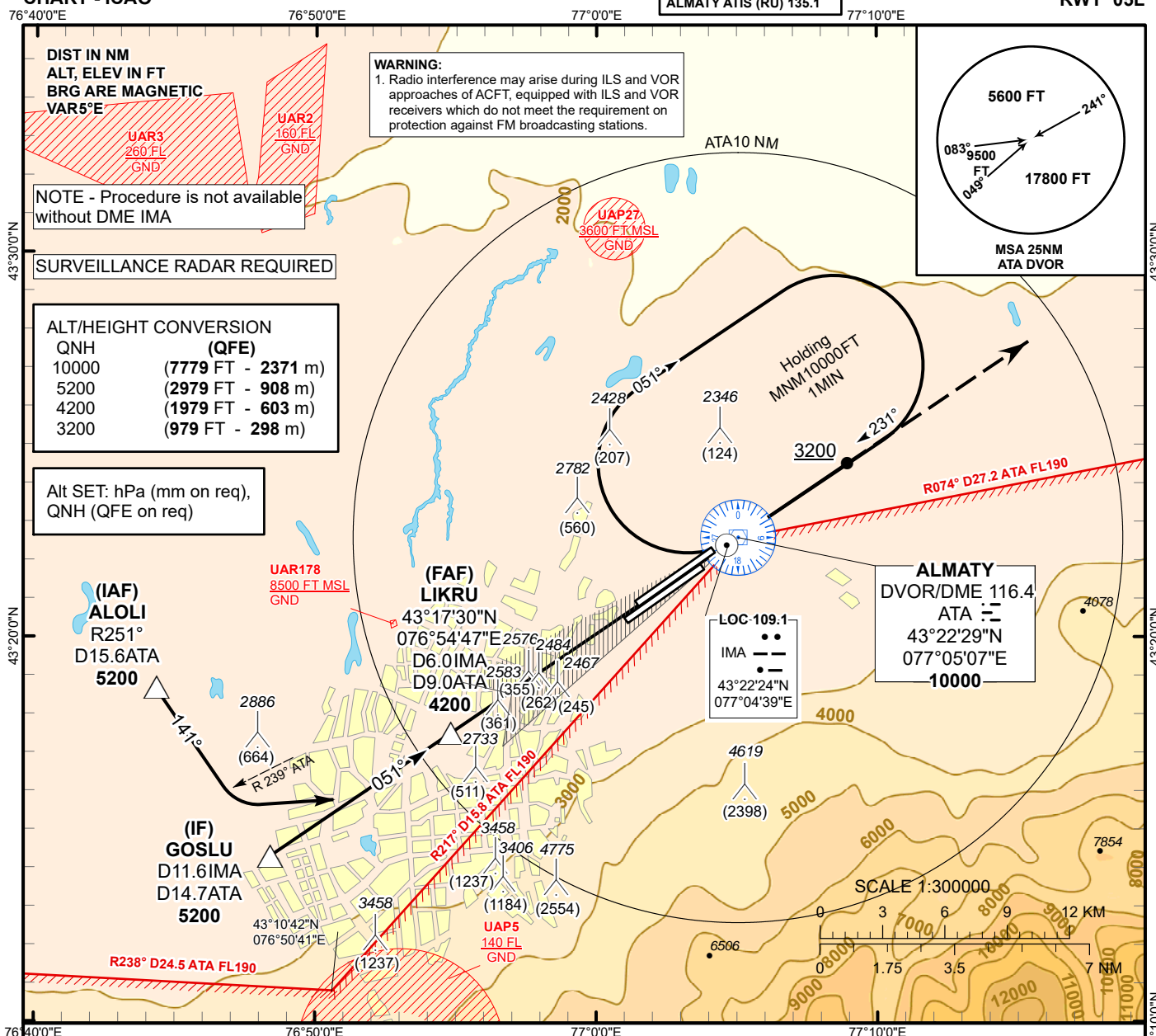


INSTRUMENT  
APPROACH  
CHART - ICAO

AERODROME ELEV **2238 FT**  
HEIGHTS RELATED TO  
THR RWY 05L - ELEV **2221 FT**

ALMATY APPROACH 118.3  
ALMATY RADAR 126.8  
ALMATY TOWER 119.4  
ALMATY ATIS (EN) 129.8  
ALMATY ATIS (RU) 135.1

ALMATY  
LOC/DME  
RWY 05L



Aircraft Category		A	B	C	D	DIST to THR DME IMA	NM	6.0	5	4	3	2	1
Straight-in Approach OCA/H						DME ATA	NM	9.0	8.0	7.0	6.0	5.0	4.0
	LLZ (GP INOP)	2830(610)				ALTITUDE	FT	4200	3889	3562	3238	2915	2594
						HEIGHT	FT	1979	1668	1341	1017	694	373
DME IMA ZERO RANGED TO THR RWY 05L													
Aerodrome Operating Minima DH ft x RVR(CMV)	LLZ (GP INOP)												
						GS	Kt	80	100	120	140	160	180
						Desc.Rate (5.2%)	ft/min	420	530	630	740	840	950
						FAF-MAPt (4.9NM)	min:sec	3:41	2:56	2:27	2:06	1:50	1:38

ALMATY  
LOC/DME

AERONAUTICAL DATA TABULATION

LOC/DME approach to RWY05L from ALOLI, GOSLU	
Fix/point	Coordinates
ATA DVOR/DME	43° 22' 29.4"N 077° 05' 07.0"E
IMA D6.0 ATA D9.0 (FAF LIKRU)	43° 17' 29.8"N 076° 54' 46.6"E
GOSLU (IF) IMA D11.6 ATA 14.7	43° 14'13.1"N 076° 48'29.8"E
ALOLI (IAF) R251° D15.6 ATA	43° 18'40.9"N 076° 44'20.6"E
THR RWY 05L	43° 20' 50.44"N 077° 01' 30.67"E
IMA LOC	43° 22' 23.6"N 077° 04' 38.8"E
Final approach descent angle is 3°	